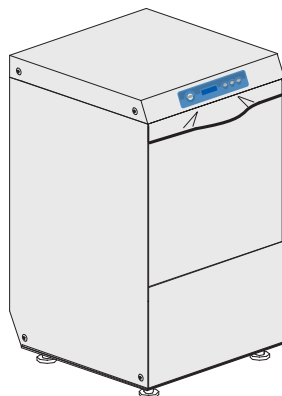


EN

**Instructions for Use and
Maintenance**

CE



COD.: 3850ET_U
Ed. 06 - 06/2015

**APPLICARE ETICHETTA
MATICOLA**



Thank you for choosing our machine.

The instructions for installation, maintenance and use found on the following pages have been prepared to ensure a long life and perfect operation of your unit.

Please, do follow the instructions carefully.

We have designed and built this machine using the latest innovative technologies. Now you shall take good care of it.

Your full satisfaction is our greatest reward.

CONTENTS	Page
WARNINGS	24
1. MACHINE DESCRIPTION	25
1.1 Machine description	25
1.2 Machine features	27
1.3 Dataplate	27
2. CONTROL PANEL AND RELATIVE SYMBOLS	28
3. OPERATION	28
3.1 Machine start-up	28
3.1.1 Start-up	28
3.1.2 Operation	28
3.1.3 Switching OFF	30
3.2 Cutlery and crockery loading	30
3.3 Detergent use	31
3.4 Rinse aid use	31
3.5 Drain pump system	31
3.6 Regeneration device (optional)	31
WARNINGS	33
4. ECOLOGICAL ASPECTS	33
4.1 Recommendations for optimal use of energy, water and additives	33
5. H.A.C.C.P. AND HYGIENE REGULATIONS	34
6. MAINTENANCE	34
6.1 Routine maintenance	34
6.2 Extraordinary Maintenance - by qualified Service Personnel	35
7. MACHINE INSTALLATION	35
7.1 Handling	35
7.1.1 Handling the product	35
7.1.2 Storage	35
7.2 Prepare for installation	35
7.2.1 Room features	35
7.2.2 Electrical connection - Characteristics	36
7.2.3 Water supply connection - Characteristics	36
7.2.4 Steam evacuation	36
7.3 Installation	37
7.3.1 Positioning the machine	37
7.3.2 Electrical connection	37
7.3.3 Water connection	37
7.3.4 Start-up	37
8. SIGNALS AND ALARMS	38
9. ENVIRONMENTAL ASPECTS	39
9.1 Packaging	39
9.2 Disposal	39
9. TROUBLESHOOTING	39



READ THESE INSTRUCTIONS CAREFULLY BEFORE INSTALLING THE MACHINE.



WARNING: FAILURE TO COMPLY, EVEN PARTIALLY, WITH THE PRESCRIPTIONS IN THIS MANUAL WILL RENDER THE PRODUCT WARRANTY NULL, AND THE MANUFACTURER SHALL NOT BE LIABLE.



WARNINGS

This instruction booklet must be kept with the machine for future consultation. If this machine is sold or transferred to other users, make sure the booklet always goes with the unit so that the new owner can have all the necessary information on operations and all relevant instructions.

The instruction booklet must be carefully read before installation and before starting the machine.

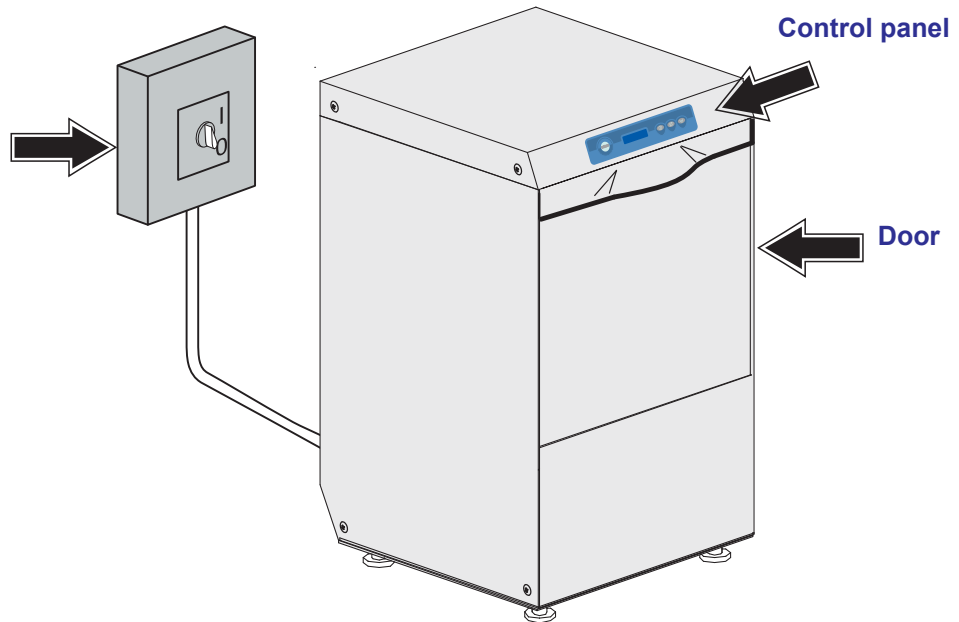
- **Adaptation of the electrical and water systems for dishwasher installation must only be carried out by qualified operators.**
- The user shall not carry out any repair and/or maintenance operations. In any case contact qualified personnel.
- Only qualified personnel can access the control panel, when the main power switch is OFF.
- Servicing of this machine must be performed by authorized personnel only.
N.B.: Use genuine spare parts only. Non-genuine parts will void the warranty and the manufacturer will take no responsibility for any damage.
- **Do not use old load pipe, but only new ones.**
- Follow the instructions given in the manufacturer's booklet for cleaning operations (chap. 6).
- This machine must only be used by adults. This is a professional machine to be used by qualified personnel, installed and repaired exclusively by qualified Technical Personnel. The Manufacturer declines any responsibility for improper installation, use, maintenance or repair.
- This appliance can be used by trained youth aged from 15 years and above. It cannot be used by persons with reduced physical, sensory or mental capabilities or lack of experience and knowledge.
- Children shall not play with the appliance.
- Cleaning and user maintenance shall not be made by children without supervision.

NOTE: The manufacturer declines any responsibility for accidents to people or any damage deriving from failure to observe the above listed instructions.

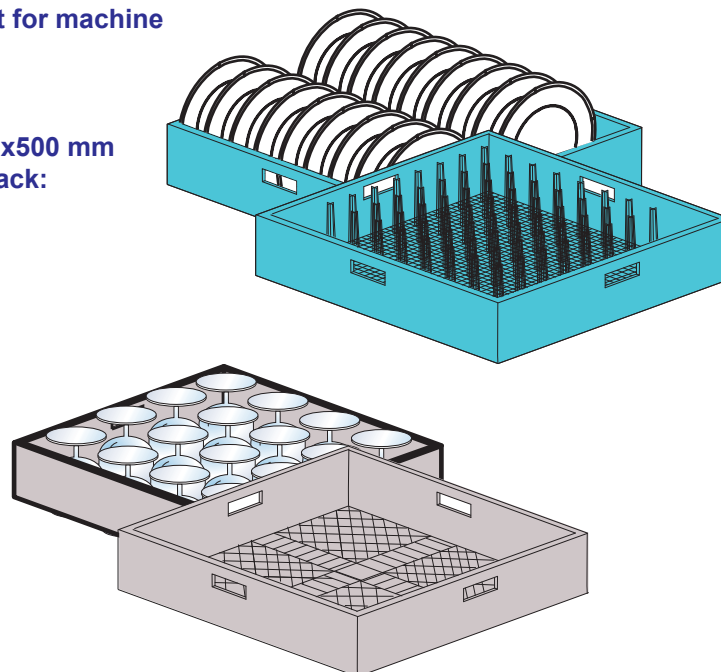
1. MACHINE DESCRIPTION

1.1 Machine Description

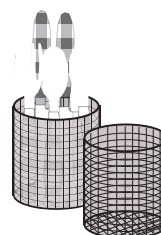
Wall-hung main power switch: at installation serviceman supply and care, according to local laws



Standard equipment for machine with a 500 mm rack:
nr. 1 glasses rack
and
nr. 1 plates rack 500x500 mm
Capacity per plate rack:
12 soup plates or
18 flat plates
Max Ø = 340 mm

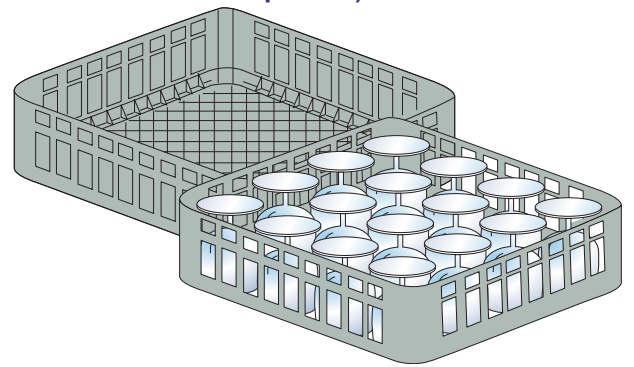


Standard equipment for machine with a 500 mm rack:
nr. 1 cutlery basket

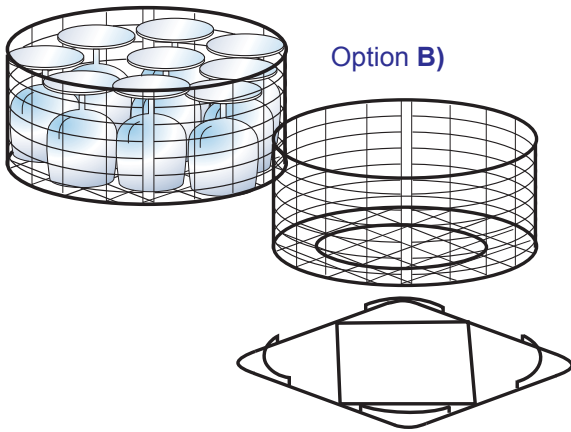


Standard equipment for machine with a 400 mm rack:
 option A) nr. 2 square glasses racks 400x400 mm
 or
 option B) nr. 2 round racks
 Ø 400 mm
 nr. 1 support for round rack

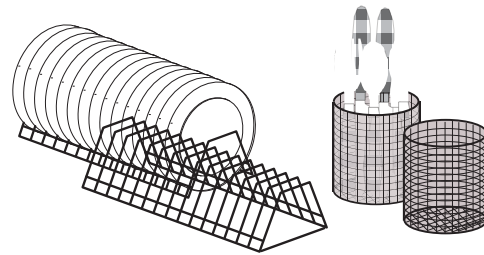
Option A)



Option B)



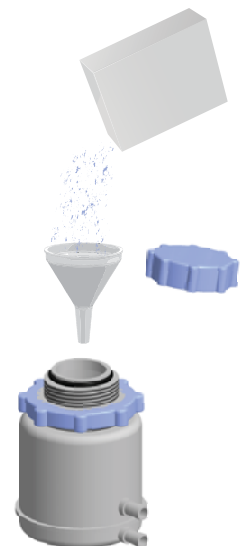
Standard equipment for machine with a 400 mm rack:
 nr. 1 cutlery basket and
 nr. 1 saucers holder



Optional:
 Probe lack
 detergent/rinse aid



Optional:
 Water softener



To operate the machine, 3 connections are needed:

- Electrical;
- Water supply;
- Water drain.

This is a cycle machine comprising a 55°C wash cycle with detergent, a 90°C rinse cycle with injection of rinse-aid in the boiler hull.

This machine is designed exclusively for washing dishes, glasses and various pots and pans with human food type of residue.

Any other use is deemed improper.

DO NOT wash articles polluted with petrol, paint, chips of steel or iron, fragile objects or material not resistant to the washing process.

Do not use acidic corrosive chemical products or alkaline and solvents or chlorine based detergents.

Do not open the machine door when operating.

In any case, the machine has a special safety device which immediately stops the unit if the door is open, thus preventing water spillage.

Always switch the machine completely off and drain the water tank, before accessing inside.

The machine is equipped with a built-in drain pump device.

The drain pump device is used to keep the correct water level in the wash tank.

To drain completely the wash tank at the end of the day, see par. **3.5 Drain pump system**.

The optional heat recovery system reduces significantly the humidity in the dishwashing-room, recovering the energy that is wasted from the roof, by condensation, by reducing the steam when the door is opened.

1.2 Machine features

The machine has a noise level below 65 dB(A).

1.3 Dataplate

Legend:

- A Power supply**
- B Total power**
- C Protection rate**
- D Total absorption**
- E Pump power**
- F Electrical protection rate**
- G Dynamic Pressure**

Code Structure:

- CODE DW XXXX:
 - FAMIGLIA PRODOTTO / FAMILY PRODUCT / FAMILLE DU PRODUIT / FAMILIA PRODUCTO / FAMILIE DES PRODUKTES
- CODE DW XXXX.YYYY:
 - FAMIGLIA PRODOTTO / FAMILY PRODUCT / FAMILLE DU PRODUIT / FAMILIA PRODUCTO / FAMILIE DES PRODUKTES
 - CODICE MODELLO / CODE MODEL / CODE ARTICLE / CODIGO MODELO / KODE VON MODELL

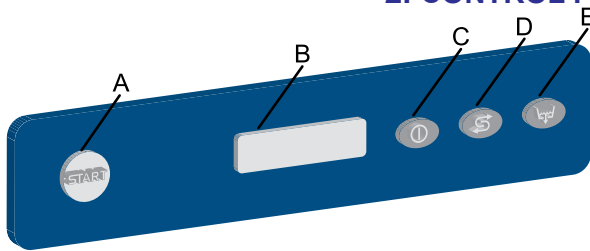
S/N Structure:

- S/N DW X xxxxxxxx:
 - ANNO / YEAR / ANNÉE / AN'O / JAHR: E=2010 - 2011, F=2011 - 2012, G=2013 - 2014, H=xxxxx - xxxxx
 - NUMERO DI SERIE / SERIAL NUMBER / NUMÉRO DE SÉRIE / NUMERO DI SERIE / SERIENNUMMER

Technical Specifications:

- Code: DWXXXX.YYYY
- Model: DESCRIPTION
- SIN: DWXxxxxxx
- Type: 8A
- Power: 400V 3N 50HZ, 3500W
- Protection: IPX3
- Pressure: 200-500 kPa
- Temperature: 60°C
- MADE IN ITALY

2. CONTROL PANEL AND RELATIVE SYMBOLS

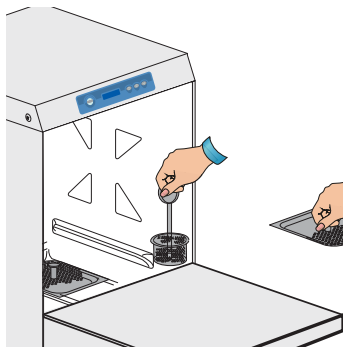


- A) START push-button to start up cycle / select cycle
- B) Display
- C) Switching – On / STAND BY button
- D) Regeneration push-button (optional)
- E) Drain Push-button

3. OPERATION

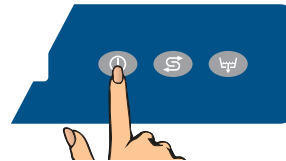
3.1 Machine start-up

3.1.1 Start-up



Pict. 1
(for machine with a 40mm rack)

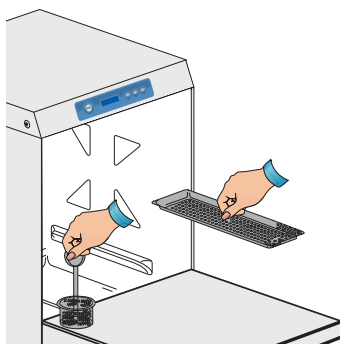
- Check if the pump suction filter is properly inserted in its seat in the wash-tank bottom (see pict. 1 and 2). This filter must be cleaned every 20 wash-cycles or whenever necessary. **DO NOT use the appliance without the filters.**
- Put the surface filters in place (see pict. 1 and 2).
- Shut the dishwasher door.
- Turn the water valve “open”.
- Turn the main power switch ON.
- The machine is on **STAND-BY**. In the **B** display, the message **STAND-BY** will appear.
- Turn the button **C**.



The machine start will be active when the **A** button will light.

On the **B** display the **STAND-BY** message will be off.

The button **A** will light in white for a few seconds, while loading the software. After loading is complete, the button will light in red.

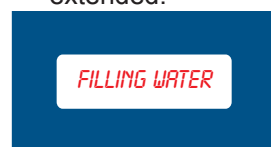


Pict. 2
(for machine with a 50mm rack)

This happens only at the first start of the day of the machine.

The water filling of the wash-tank is done by pre-heating via the boiler.

On the **B** display, the messages **FILLING WATER** and **HEATING** will alternate. Should the machines be equipped with the WRAS certified Break Tank, the tank filling phase is extended.

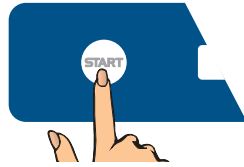


The display will read **HEATING**, till wash-tank and boiler will reach the set temperatures. During this process, the machine will not allow any cycle selection or start.

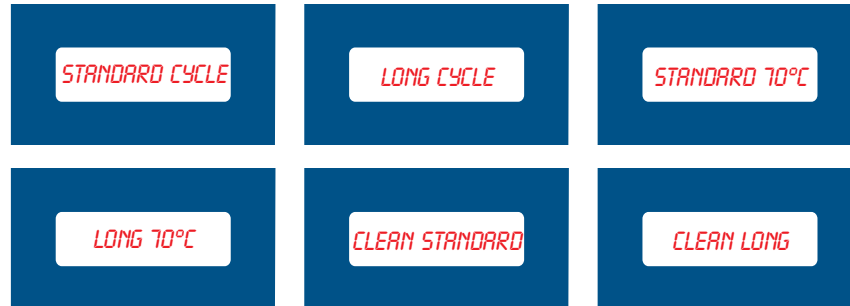
If the machine is in standard configuration, with hot water in-feed (50°C), with no extra power, the **A** button will light in green after some 20 min.

3.1.2 Operation

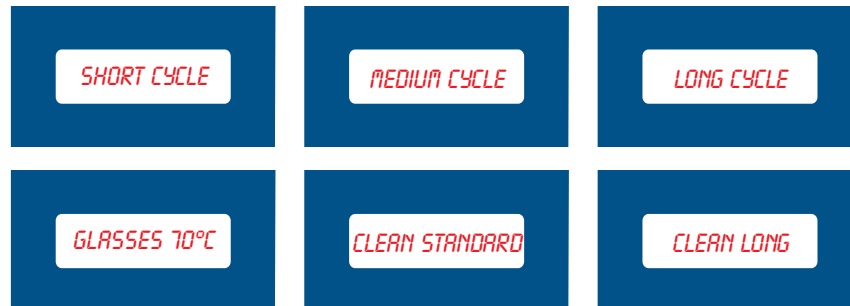
- Insert the rack filled with dishes to wash. The plates must be correctly placed in the rack (see par. 3.2).
- Select the wanted washing cycle by pushing the green START button “**A**”. The display will show in sequence all these available programs.



Once the wanted program is displayed, do release the button.
Available programs for machine with a 400 mm rack:



Available programs for machine with a 500 mm rack:



- All wash-time long the display will read the wash-tank temperature and the boiler temperature.
Below the temperatures indications line-bar is displayed to show the progression of the wash-cycle.



At the end of the washing cycle, a hot rinse cycle will take place
A blue/green flashing on the button **A** will indicate the **CYCLE ENDED**.



NB: At cycle-end, keeping the door closed, dishes will not dry. Take out the rack or keep the door open to allow evaporation, helping the drying of the dishes.

When opening the door, the button **A** will turn green, indicating that the machine is ready for a new wash-cycle.

NB: The last cycle used remain in the memory of the electronic board, ready for the next use.

If you run the machine in "partial drain" mode (not in total Clean water mode), the machine will automatically perform a full drain of the washing tank, in order to keep performances at beat, every 30 cycles (see par. 3.5 Drain Pump System).

3.1.3 Switching OFF

- Turn the button **C**. The display will show **STAND-BY**.



- At the end of the day, clean the machine (see chap. **6 Maintenance**).
- Shut the water valve.
- Switch the main power switch OFF.

3.2 Cutlery and crockery loading

Before cutlery and crockery loading in the machine, coarsely clean them from the leftover food.

It isn't necessary to rinse the cutlery and crockery under water.

ATTENTION: Do not wash articles polluted with petrol, paint, chips of steel or iron, ash, sand, wax, lubricant grease. These substances damage the machine. Do not wash fragile objects or material not resistant to the washing process.

Note the following recommendations:

- Crockery and cutlery should not be inserted inside one another, covering each other.
- Place the crockery in order to all surfaces can be reached by water; otherwise the dishes are not washed.
- Make sure all the crockery are in a stable position and that the hollow containers don't overturn (cups, glasses, bowls, etc.) .
- Place in the rack all the hollow containers such as cups, glass, etc. **upside-down**.
- Place the crockery with deep hollow with upper face downwards, so that water can flow out.
- Make sure the smaller crockery do not fall from the rack.
- Check all the wash arms runs freely and they are not blocked by too tall or too prominent crockery. Eventually, run a manual rotation of the arms to check it.

Some foods, such as carrots, tomatoes, and others, may contain some natural dyes substances, that in large amounts, can alter the crockery and plastic parts colors. Any discoloration does not mean that the plastic is not heat resistant.

Crockery and cutlery not suitable for dishwasher

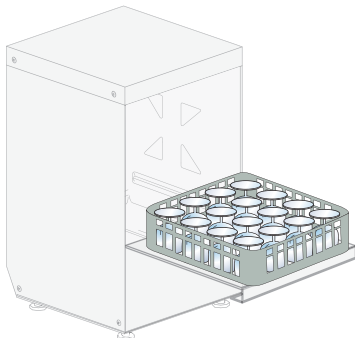
Not suitable for dishwasher:

- Wooden crockery and cutlery or with wooden parts; water at high temperature causes deformation to wood. Also the adhesives used are not suitable for treatment in the dishwasher; a consequence could be the handles detachment.
- Crafts, precious vases or decorated glasses.
- Not heat-resistant plastic crockery.
- Copper, brass, pewter or aluminum objects: they may become discolored or opaque.
- The decorations on glass, after a certain number of washes, can lose gloss.
- Fragile glasses or crystal items, if often washed, can become opaque.

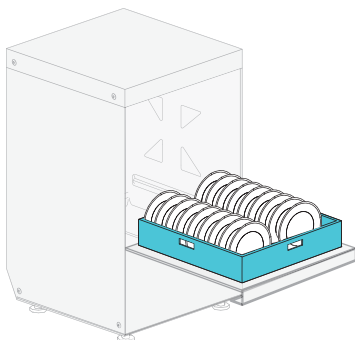
We recommend to buy exclusively crockery and cutlery suitable for dishwashing.

After several washes, the glass can become opaque.

It is mandatory to repeat the washing cycle if at the end of the cycle the crockery are not well clean or if there are washing residues (glasses, cups, bowls, etc. with liquid inside).



Pict. 3



Pict. 4



3.3 Detergent use

The machine has a standard detergent dispenser. The machine automatically sucks the product.

The detergent shall be the NO FOAM type, suitable for industrial dishwashers.

The use of good quality liquid detergents is recommended.

Follow the manufacturer's recommendations for chemical dosage, related to the local water hardness. 1 cm. of the product drawn into the tube is equal to about 0.15 g. A correct amount of detergent is very important for a successful wash.

Should the detergent lack, the display will show **DETERGENT LEVEL** (only with optional "Sensor for Chemicals Low Level").



3.4 Rinse aid use

The machine has a standard rinse aid dispenser. The machine automatically sucks the product.

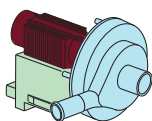
The rinse-aid chemical, shall be suitable for professional glass and dishwashers. It is advisable to rely on specialized retailers in the sector.

Should the detergent lack, the display will show **RINSE-AID LEVEL** (only with optional "Sensor for Chemicals Low Level").



3.5 Drain pump system

Press the key **E** till the display will show **TANK DRAINING**.



The discharge pump will automatically drain the wash-tank.

During the drain process, the button **A** will light in blue and will be flashing.

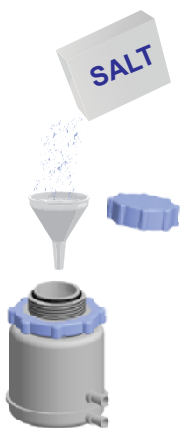
After the draining is complete, the machine will turn automatically in **STAND-BY** mode.



If you want to refill the machine for a new cycle, see par. 3.1.

3.6 Regeneration device (optional)

Should the machine be equipped with a water-softener circuit, this will be fully automatic. When needed, a 120" regeneration cycle will automatically activate. During this phase, the display will show the letter **R**.



Pict. 5

If needed, the **R** cycle can be activated even during the wash-tank loading. If the activation happens during the wash-cycle, this will be elongated.

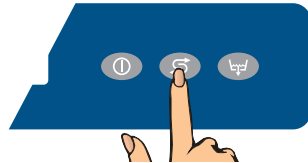
The circuit board is designed to call periodically for a 20 min. manual regeneration cycle. This regeneration cycle can also be activated by the user, should the rinse quality be dissatisfactory.

When the display shows **PRESS WATER SOFTNER REGENERATION KEY**.



or when the users want to activate the **R** regeneration cycle, start the following procedure:

- Should the display show **SALT LEVEL**, fill the special container, placed on the inside of the tank, with coarse salt (1-4 mm. grains), being careful not to spill it into the sump. A strong concentration of salt can negatively affect the correct functioning and service life of the machine and generate rust and the steel oxidation. After filling with salt, lock the plug tightly.
- With the machine in **STAND-BY** mode, the water valve open, the wash-tank empty and the door shut, press the **D** button. The button **A** will start flashing in blue.



- During this cycle, the display will show the steps in progress and the time remaining.
- This cycle cannot be interrupted and the normal operation is inhibited.
- At the cycle end, the machine will switch in **STAND-BY** mode, automatically.



At this moment, it is possible to switch the machine OFF (see par. **3.1.3 Switching OFF**) or start a normal operation phase(see par. **3.1.2 Operation**).



In case of water hardness above 35°f an external water softener is recommended.

WARNINGS:

- Do not slam the door when opening and closing.
- Do not put material or objects on the machine.
- The machine has an IPX3 protection rating against accidental water splashes and is not protected against pressurized water jets. Pressure-cleaning systems shall, therefore, not be used on this machine.
- Do not dip bare hands into water containing detergent. If this should occur, wash them immediately with plenty of water. Check the safety instructions on the detergent container.
- Some important rules must be followed for using this appliance:
 - 1) never touch the appliance with wet hands or feet;
 - 2) never use the appliance when barefooted;
 - 3) do not install the appliance in places exposed to water splashes.
- **This machine must be disconnected from the main electrical supply after use at the end of the day and for any service/maintenance operation. Switch off the main switch located on the wall, which shall be installed by a professional installer. Shut the water supply valve(s).**
- Do not cover the intake or dissipation grids.
- Do not use water to extinguish fires on electrical parts.

WARNING: INTERNAL CLEANING OF THE MACHINE SHALL BE CARRIED OUT AT LEAST 10 MINUTES AFTER THE POWER SWITCH HAS BEEN TURNED OFF.

WARNING: DO NOT INSERT HANDS AND/OR TOUCH THE PARTS LOCATED AT THE BOTTOM OF THE WASH TANK AND/OR AT THE END OF THE WASH CYCLE.

4. ECOLOGICAL ASPECTS

4.1 Recommendations for optimal use of energy, water and additives

Salt dosing: A pre-set (by the manufacturer) quantity of salt is injected in the resins at each regeneration cycle. It is important to observe the number of regeneration cycles recommended in paragraph **3.6 Regeneration device** in order to avoid salt spills or lime deposits.

Use the machine fully loaded when possible: This shall prevent detergent, rinse aid, water and energy consumption waste.

Detergent and rinse-aids: Use detergents and rinse-aid chemicals with high biodegradability, to best respect the environment. Verify proper dosage in relation to water hardness at least three times a year. Excess product pollutes rivers and seas while an insufficient dose results in unsatisfactory dish washing and/or hygiene.

Boiler and Wash-Tank temperatures: The boiler and tank temperatures are set by the manufacturer in order to obtain the best washing results with detergents on the market. The temperatures can be reset by the installer in relation to your detergent.

Pre-washing: Carefully pre-wash with a moderate amount of water at room temperature to facilitate the removal of animal fats. To remove encrusted materials warm water soaking is recommended.

Note: Wash objects as soon as possible to avoid deposits from drying and compromise effective washing.

For effective washing routine dishwasher cleaning and maintenance is advised (see chap. 6).

Disregarding the points listed above and of any the information contained in this manual can cause energy, water and detergent waste with a subsequent increase in running costs and/or performance reduction.



5. H.A.C.C.P. AND HYGIENE REGULATIONS

- When starting the machine ON, no wash-cycle will be starting until the set boiler and wash-tank temperatures are reached. During operation, the machine will not start the rinse cycle till the set boiler temperature is reached.
- Remove carefully all solids from the objects to be washed, to avoid obstruction of filters, nozzles and piping.
- Drain the wash tank and clean the filters at least twice a day.
- Check if the detergent and rinse-aid dosage are correct (as recommended by the manufacturer). In the morning, before starting the machine, check that the quantity of chemicals in the canisters is enough for daily supply.
- Keep your working tables clean.
- Extract the rack with clean hands or gloves to avoid finger marks.
- Do not dry or polish the washed objects with cloths, brushes or rags that are not sterile.



6. MAINTENANCE

6.1 Routine maintenance

WARNING: The machine is not protected against pressurized water jets. Do not use pressure cleaning system against the machine.

It is recommended to contact the seller of chemicals for proper cleaning instructions, in order to have detailed indications on methods and products for the correct periodical machine sanitation.

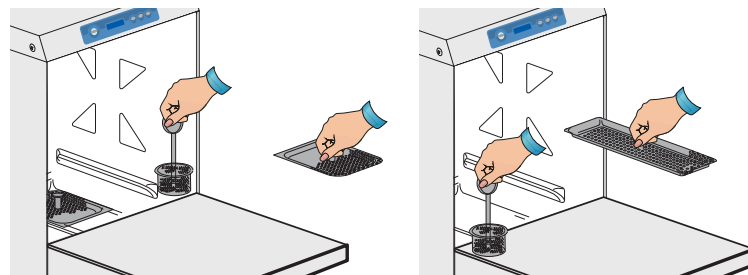
Do not use bleach or chlorine based detergents.

Daily cleaning is needed to ensure that the machine runs perfectly. The following shall be carried out:

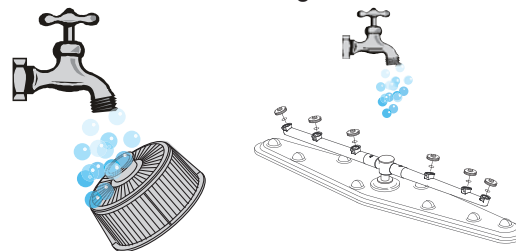
- Turn the machine in **STAND-BY** mode, by pressing the push-button **C** of the control panel (see chap. 3).



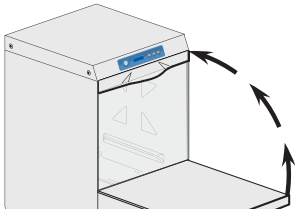
- Remove the surface filters and clean them under running water. Drain the sump water (see par. 3.1.3).



- Remove the pump filter and clean with a brush and a water shower.
- Remove the arms by loosening the fixing screws, and thoroughly clean them, and the nozzles under running water.

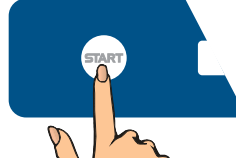


- Reassemble the parts and reposition the wash pipes firmly in place. Take extreme care to re-assemble the nozzles in the right position (open and / or closed nozzles) and that the arms are installed with the right axial angle.

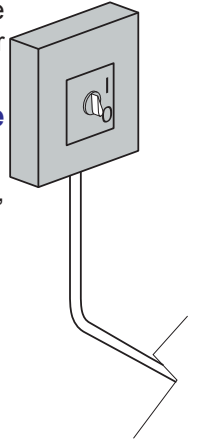


- Clean the tank very carefully, using a water shower.
- It is recommended to leave the machine door open at the end of the day.
- **Automatic cycle of machine self-cleaning/rinsing:** recommended at each day end.

The machine should be in **STAND-BY** mode. Push **START** button **A**; an automatic cycle of 60 seconds will start, after this the machine will be in **STAND-BY** mode.



- Shut the water valve.
- Turned off the machine by switching the main power switch OFF.



6.2 Extraordinary Maintenance – by qualified Service Personnel

Once or twice a year have the machine inspected by a qualified technician, in order to:

- 1 Clean the solenoid-valve(s) filters;
- 2 Remove scale from the heating elements;
- 3 Control the status of the seals;
- 4 Control for components integrity and/or consumption;
- 5 Control the dispenser(s) efficiency;
- 6 Check the efficiency of the door safety switch.

A qualified electrician, should check all electric connections inside the machine, at least once a year.



7. MACHINE INSTALLATION

7.1 Handling

7.1.1 Handling the product

The machines must be handled strictly as shown in pict. 6 regarding the grip points indicated for lifting with a lift truck.

Latch the machine in a way that secures no vibration or shocks during transportation.

N.B.: Slings with ropes not recommended.

After unpacking, make sure the appliance has not been damaged due to transportation. If it has been, do notify the seller about this problem. If the damage might question the machine's safety, do not install the appliance.

Double check the firm tightness of all hose-clamps on piping, nuts and bolts, and fasteners, that might come loose with the transport, to prevent water dripping or leakages, or other damages, during the machine's operation.

See chapter 9 for disposal of the packing material.

7.1.2 Storage

Storage temperature: min. +4°C - max +50°C - humidity <90%.

The stored parts should be checked periodically, to detect any sign of deterioration.

Do not put anything on the machine, even if packed in its box.

7.2 Prepare for installation

This is just a guide-line for the machine installation.

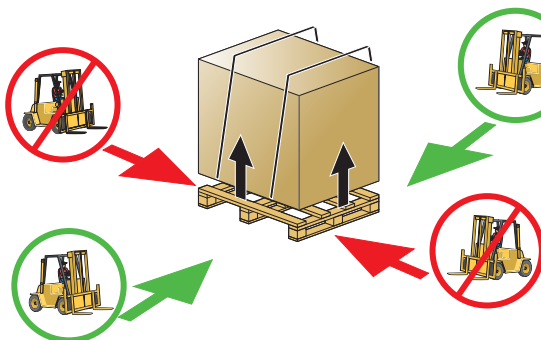
The installation must be performed by a qualified engineer.

7.2.1 Room features

Install the machine, in a room closed-by weather and with a guaranteed temperature-range between 5 and 35°C.

The machine is equipped with thermostatic sensors to manage the temperatures. To guarantee a proper functionality these sensor shall not operate at a room temperature below 5°C.

For this reason, it is fundamental that before starting the machine reaches the room temperature.



Pict. 6

7.2.2 Electrical connection - Characteristics

The electrical connection to network shall be carried out in accordance to the local laws in force.

Make sure that the supply voltage is the same as reported on the machine plate and that the network can stand the needed power absorption shown on the same plate.

Make sure that the facility is equipped with efficient ground connection.



WARNING: check very carefully if the “ground connection” of the machine, is properly sized and fully efficient, and that not too many units are connected on it. An undersized or poor “ground connection” might lead to corrosion and/or pitting effect on the stainless steel plates, even to perforation.

A suitable omni-polar one-way switch shall be installed and sized according to the absorption provided, in order to completely guarantee the disconnection from the supply mains, under “category III” overvoltage conditions.

This switch shall be included in the power network solely and exclusively used for this purpose and installed in the immediate vicinity of the machine. Always turn the machine off via this switch. This is the only model of switch that guarantees a total electrical power disconnection.

7.2.3 Water supply connection - Characteristics



Table 1

Water characteristics table	Min	Max
Static Pressure	200Kpa	400Kpa
Dynamic Pressure*	150Kpa	350Kpa
Water hardness**	2°f	8°f
Cold water-supply temperature***	5°C	50°C
Hot water-supply temperature****	50°C	60°C
Capacity	10lt/min	

*Should the water supply pressure be more than 400 kPa, a pressure reducer must be installed (only for those versions where it is not a standard supply, already).

****It is compulsory to install a water-softener, in case of water with average hardness above 8°f.** Washed objects will be cleaner and the machine will last much longer.

The machine can be equipped with a water softener, on request. If the machine is equipped with a water-softener, a regeneration of the resins shall be done on regular basis (see par. 3.6).

N.B.: Any damage caused by limestone (calcareous water higher-up than 8°F and without water-softener) will not be covered by warranty.

A periodical check of the supplied water hardness is highly recommended.

*****The machine must be supplied with cold water, if equipped with the Heat Recovery System (min 5°C - max 15°C).**

Machines shall be made with extra power in case of cold water infeed.

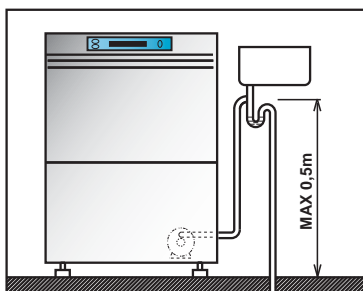
****The water supply temperature shall never exceed 55°C.

The drain tube shall always be connected to a siphon in order to prevent the release of odors. Maximum drain height = cm. 50 (see pict. 7).

7.2.4 Steam evacuation

In accordance with regulations of environmental hygiene, for the proper functioning of the machine and a healthy environment for the operator who working in there, it should be at least 10 air volume changes per hour in the room where the machine is installed.

For small wash rooms we recommend at least 15 air volume changes per hour.



Pict. 7

7.3 Installation

7.3.1 Positioning the machine

Remove the packing with care.

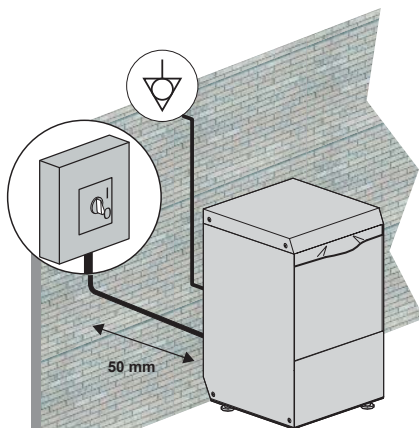
Lift the machine as described in par. 7.1.1 **Handling the product**.

Position the machine as shown on the installation diagram (lay-out) approved at the time of the offer.

Maintain a minimum distance of about 50 mm from the walls, so that motors are ventilated (see pict. 8). Install suction hoods to assure proper ventilation of the room, in order to eliminate steam and excessive humidity.

Check that the machine is properly levelled, by adjusting the legs.


Make sure the machine is not standing on the power cable or on the filling/drain hoses. Level the machine flat, by adjusting the support feet (see pict. 9).



Pict. 8

7.3.2 Electrical connection

The electrical connection shall be carried out in accordance to the local laws in force.

The machine has a connection at the back, indicated by the symbol , that is meant to link the steel structure and masses among different apparatuses, to prevent electro-static electrical shocks.

The electrical supply cable must be new, flexible, and according to "har" H07RN-F or a local valid equivalent. The cable size is dimensioned according to the power.

Should the electrical supply cable get damaged it shall be changed by the Manufacturer, or his Authorized Service, or other technician with equivalent qualification, to prevent any risk.

If the machine is fitted with a three-phase pump, check the correct motor rotation (right rotation as per arrow on the casing). This is not needed if the pump is a single-phase model (standard).

7.3.3 Water connection

Connect the machine draining hose to the connection located at rear, under the back-panel.

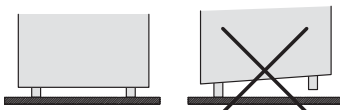
The drain tube shall always be connected to a siphon in order to prevent the release of odors.

Maximum drain height = cm. 50 (see pict. 7).

In those machines equipped with "water softener" the water supply temperature shall not exceed 40°C, to avoid damages to the filters' resins.

7.3.4 Start-up

At installation engineer's care.



Pict. 9



8. SIGNALS AND ALARMS

The alarm messages are displayed, based upon their meaning.

When displaying **PRESS WATER SOFTNER REGENERATION KEY** a total regeneration is needed (only with optional water softener).

When displaying **DETERGENT LEVEL** add detergent in the detergent tank (only with optional "Sensor for Chemicals Low Level").

When displaying **RINSE-AID LEVEL** add rinse-aid chemical in the rinse-aid tank (only with optional "Sensor for Chemicals Low Level").

When displaying **SALT LEVEL** add salt in the container in the wash-tank (only with optional water softener).

When displaying **SHUT DOOR** means that the open door does not allow the maneuver tried, or a wash cycle was in progress, when lifting the door.

When displaying **DRAIN WATER IN WASH TANK** means that a full wash-tank does not allow the maneuver tried.

When displaying **SELF-CLEANING: REMOVE FILTERS AND PRESS START** the machine requires a self cleaning cycle.

When displaying **SELF-CLEANING CYCLE OVER** the machine ended the self-cleaning cycle.

TYPE OF ALARM	CAUSE	REMEDIES
B1	BOILER FILLING FAIL	Open the water supply valve and verify a proper water supply flow. Contact Technical Service
B2	BOILER PROBE FAIL.	Contact Technical Service
B3	BOILER HEAT. ALARM	Contact Technical Service
B4	RINSING FAILED TIME OUT RINSE	Contact Technical Service
B5	BOILER OVERHEATING	Contact Technical Service
E1	WATER LOAD FAILED	Open the water supply valve. Contact Technical Service
E2	TANK PROBE FAIL.	Contact Technical Service
E3	TANK HEATING ALARM	Contact Technical Service
E5	TANK OVERHEATING	Contact Technical Service
E6	TANK DRAINING FAIL.	Check the overflow pipe. Contact Technical Service
Z4	TANK SENSOR FAILURE	Contact Technical Service
Z5	TANK HIGH LEVEL	Drain and load the tank. Contact Technical Service
Z6	TANK LOW LEVEL	Drain and load the tank. Contact Technical Service
Z9	REGENERATION FAIL	Contact Technical Service
Z10	ALARM SL8 - BREAK TANK HIGH LEVEL	Contact Technical Service

Table 2



9. ENVIRONMENTAL ASPECTS

9.1 Packaging

Packaging is made of the following components:

- a wooden pallet;
- a nylon sack (LDPE);
- a multi-layer carton;
- polystyrene (PS) strips;
- polypropylene (PP) banding.

All above materials, shall be disposed and treated in accordance with the Local Laws in force.

9.2 Disposal

The symbol WEEE/RAEE used on this product indicates that it cannot be treated as domestic waste. Proper disposal of this product contributes to protecting the environment. For more information on product recycling, contact the local authorities, domestic waste authorities or the dealer where the product was purchased.

For product or parts disposal, follow the Council directives 2011/65/UE and 2012/19/UE as amended and/or application legislative decrees.

The present product or parts cannot be disposed of as urban waste but shall be collected in separate containers (see the waste bin on wheels symbol with an "X" on the product).

At the time of product disposal, the user shall refer to the waste electrical and electronic equipment (WEEE/RAEE) specification.

The manufacturer guarantees the absence of dangerous substances in the EEA used in conformity to the directive 2011/65/UE.

If the user does not comply with the regulations he/she shall be subject to the penalties foreseen by each member state.

Disconnect electricity and water before disposal.

Cut away the electrical cable to ensure that further use is impossible.

All metal parts are recyclable as they are made of stainless steel.

Recyclable plastic parts are marked with the plastic material symbol.

10. TROUBLESHOOTING

Type of Problem	Possible Causes	Cure
The machine does not turn on.	Main switch not ON.	Turn switch ON.
The machine does not load water.	Water valve shut.	Open the hot and/or cold water valve.
	Rinse area nozzles or solenoid-valve filter blocked and/or scaled with limestone.	Clean the rinse arm nozzles, piping and solenoid-valve filter. Check that the water hardness is <10°f.
	Defective pressure-switch.	Replace pressure-switch.
START button A flashing (red colour)	See chapter 8 Alarms	---
Washing results are unsatisfactory.	The washing nozzles are obstructed or the rack does not rotate.	Clean the nozzles carefully, and check the right positioning of the wash-arm, tightening firmly.
	Foam is present.	Use no-foam detergents or reduce the dose in use. Check the rinse-aid dosage.
	Fats or starches not removed.	Insufficient detergent concentration.
	Filters are dirty.	Remove filters, clean with brush under a jet of water and replace in original position.
	Check tank temperature (which must be between 50°C and 60°C).	Adjust the thermostat or check correct heating element operation.
	Wash time insufficient for the type of dirt.	Select a longer wash-cycle, if possible, otherwise repeat the wash cycle.
	Wash water is dirty.	Drain the tank water, clean the filters; refill the tank and replace the filters correctly.

Type of Problem	Possible Causes	Cure
Glasses or dishes are not properly dried.	Not enough rinse aid.	Increase dosage by turning the dispenser screw (see par. "Rinse aid dispenser").
	The rack is not suitable for the pots or the tools.	Use the suitable rack which gives the pots and tools an inclined position so that water can rinse away.
	The washed items may have been sitting in the wash chamber too long.	As soon as the cycle stops, remove the rack with pots and tools so that they can dry more quickly in the air.
	Rinse temperature under 80°C.	Check the boiler thermostat temperature.
	Surface of dishes and glasses too rough or porous for material wear.	Replace type of dishes and glasses used. If the dirt on the dishes is dry and old, soak before washing.
Streaks and spots on glasses and dishes.	Too much rinse-aid chemical.	Reduce the rinse aid amount by turning the micrometric dispenser screw (see par. 1.4 "Rinse aid dispenser").
	Too hard water.	Check the water quality. Water must not exceed 10°f in hardness.
	For appliances with softener: too little salt in the salt container or the resins have not been properly regenerated.	Fill the salt container (coarse salt: 1-2 mm grains) and regenerate the resins more often. If lime deposits are also observed on the body of the machine, have a qualified technician check the operation of the water softener.
	Salt present in dishwasher sump.	Thoroughly clean and rinse the appliance, and avoid spilling salt when filling the container.
The machine suddenly stops during operation.	The machine is connected to an overload device.	Connect the machine on a own overload device (call Service).
	A machine safety device was triggered.	Check the electrical devices (call Service).
The machine stops during the wash stage and starts refilling water.	The previous day's water was not changed.	Drain the tank totally and refill.
	Excessive water temperature in tank.	Call Service to check thermostat and pressure-switch.
	Defective pressure switch.	
The washing pump doesn't work	The pump is blocked	Call the Technical Assistance service

**N.B.: For any other question, please contact your Service provider.
The manufacturer has right to modify any technical characteristics without prior notice.**